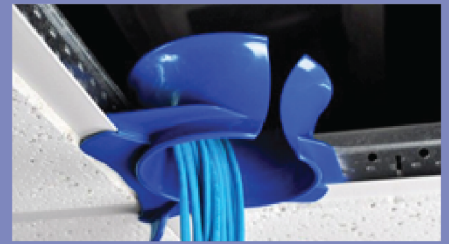


1. BE SMART ABOUT IT:

Take care during rough in and you will maintain your headroom.
Good rough in practices make termination and testing faster and easier.

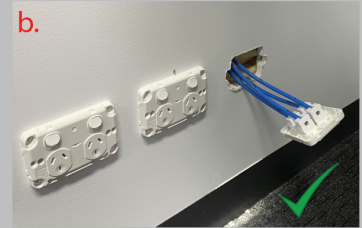
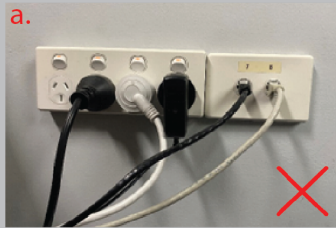
2. PULLING IN THE CABLE:

- a. When initially pulling the cable, most of the damage occurs when it is dragged across the roof beam.
- b. Take care at this point, put a piece of conduit or similar to soften the edge or corner.



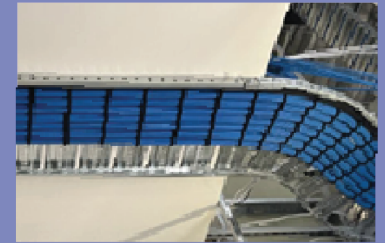
3. SEPARATION (S009):

- a. 50mm separation minimum during cable runs.
- b. 150mm separation at outlet (between terminations).



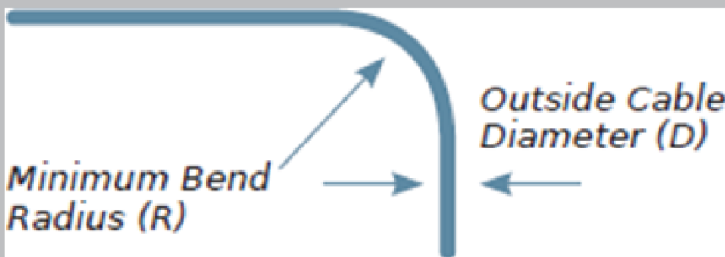
4. BUNDLE SIZES:

- a. 24 Cables max in a tray or catenary - Do not exceed 24 cables.
- b. CERTECH requests bundling for aesthetics and heat rise mitigation, except Cat6A UTP requires loose lay for performance.



5. BEND RADIUS:

- a. 10x cable radius install
- b. 4x cable radius once complete - golfball



6. VERTICAL PATHWAYS:

- a. Must be supported with cable tray or fixings.

7. No nylon cable ties are to be used on cable



8. WATER

- a. Water and data cables Do Not mix!
- b. If water gets into the end of the cable, you have a matter of seconds before the cable is destroyed.
- c. Keep your cables off the ground.

